

Troop 26 Flag Placement Money Earning Program

March 28th, 2016





Flag Placement Program Goals

- Establish a unique money earning opportunity for Troop 26 scouts
- Provide a steady revenue source for Troop 26
 - Court of Honor
 - Troop 26 WOW
 - Troop Equipment
 - Special Events (Jamboree, Summer Camp, backpacking program, etc.)
- Make Troop 26 more visible to the community
- Provide a community service



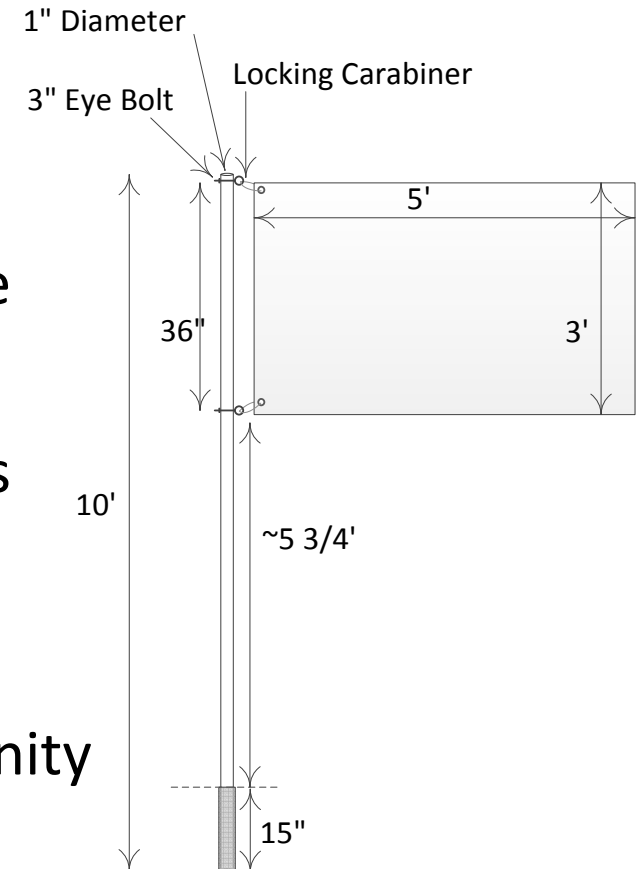
Flag Placement Service Overview

- The Troop will sell service subscriptions for \$50/year
 - Neighborhoods will be assigned by the Flag Program committee
- Flags will be placed for 5 holidays per year
 - Memorial Day (May 25th)
 - Independence Day (July 4th)
 - Veterans' Day (November 11th)
 - Flag Day (June 14th)
 - Labor Day (Sept. 5th)
- Flags are placed before holiday and picked up after the holiday
- Each flag team will consist of 2 adults and 3-5 scouts
- Each flag team will earn money for each flag that is placed



Flag Placement Implementation

- Flags will be 3' x 5' Nylon All Weather Flags
 - Working with Tulsa-based Liberty Flags
- Flags will be mounted to 10' galvanized metal pole
- Two eye bolts will be mounted to the pole
- Flags are connected via carabiners to the eye bolts
- A PVC sleeve will be installed in the ground
- A cap will be placed on the PVC when not in use
- Scouts will raise flag in Class A with honor and dignity





Money Earning Opportunities

- Commission for Selling a subscription = \$3 per subscription
 - \$3 x 100 subscriptions = \$300
- Fee paid for installing sleeves = \$2 per sleeve
 - \$2 x 100 subscriptions = \$200
- Fees paid for placing flags
 - \$0.75 per flag placed per scout (assumes crew of 3 scouts)
 - \$0.75 per flag retrieved per scout
 - \$0.125 per flag placed per adult (assumes 2 adults)
 - \$0.125 per flag retrieved per adult
- Example for crew of 5 (2 adults & 3 scouts) placing 100 flags
 - \$1.50 x 100 = \$150 per scout x 5 times per year = \$750 per year per scout
 - \$0.25 x 100 = \$25 per adult



Participation Opportunities

- Sales Only - \$3 per sale
- Be a member of the sleeve installation team - \$2 per sleeve
- Fill in for crew members who are unavailable for placements
 - \$0.75 per flag
 - Depends on crew size
- Join a crew
 - Crews earn commission for each sale – Either individual or shared commission
 - Crews earn sleeve install fee – Crew shares the \$2 per sleeve
 - Scouts on the crew share \$4.50 per flag per holiday + \$0.50 for adults



Crew Requirements

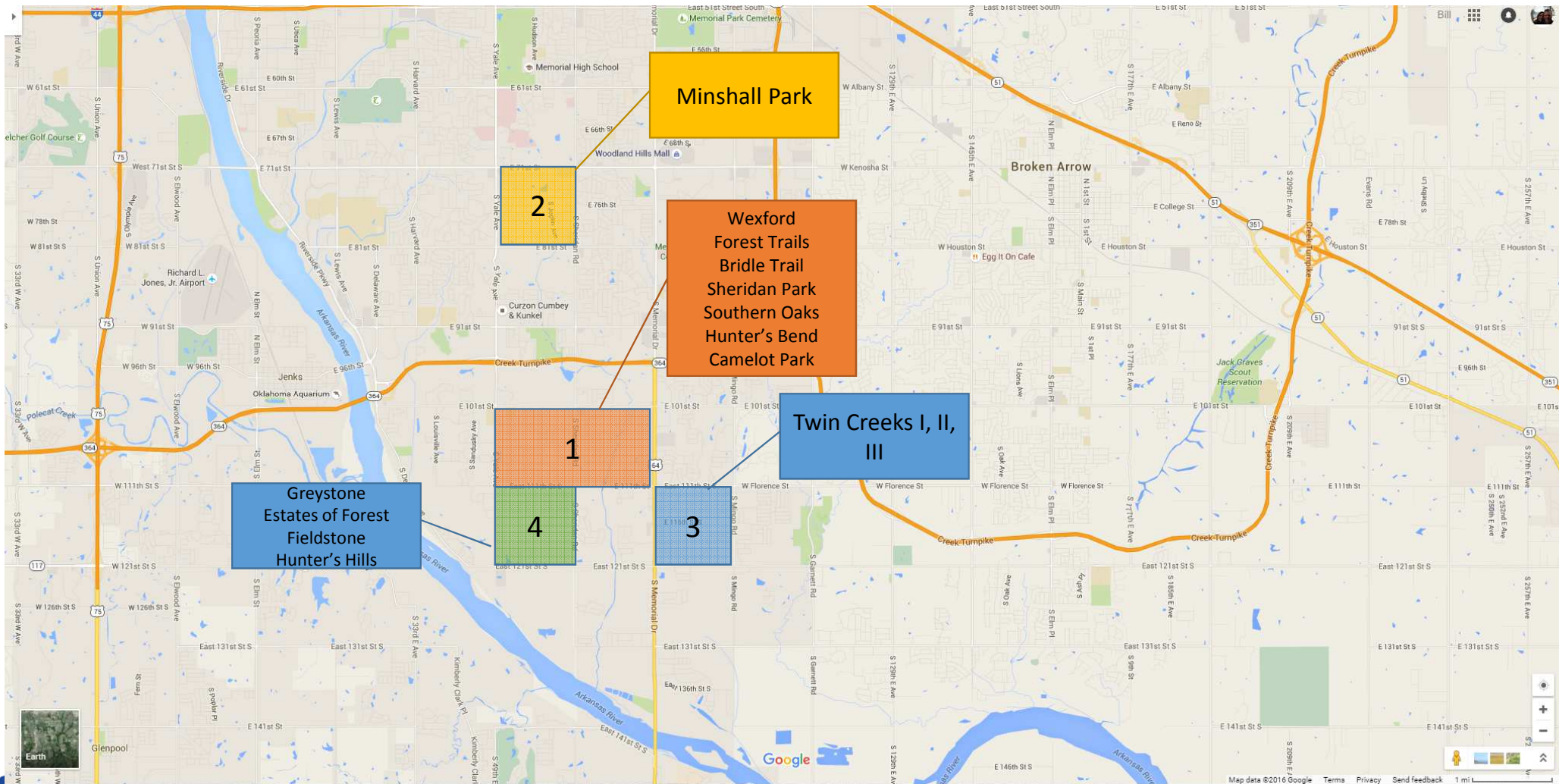
- Must have 2 adults
 - Can be Parents & ASMs
 - Will need to be able to haul equipment (10' poles & flags)
- Must have 3 scouts
 - Can have up to 6 depending on the number and density of subscribers
- Must commit to 1 Full Year of Service
 - Responsible for finding replacements when unavailable to cover the route
- Crew will be assigned a route
 - Must stick to their assigned territory
 - Can increase subscribers in their territory
- Decide your crew commission structure



Kickoff Plan

- Crews can begin forming now – submit paperwork
- We currently have 0 subscribers
- Targeting 500 subscribers by the end of the year
- Will be targeting pre-defined Home Owners Associations
 - Working approval and support with several HOA
 - Let Christopher Smith know if you have a HOA/neighborhood proposal
 - Expecting to nail down targeted neighborhoods by April 6th
- Targeted neighborhood sales campaigns on April 9th & 16th
- First placements will be for Memorial Day







Program To Do List

- Finalize website
- Finalize Payment Systems
- Recruit crews => Starts today
- Finalize approval from HOAs => April 6th
- Recruit subscribers => April 9th & 16th
- Finalize design of the sleeve => April 6th
- Purchase parts and supplies
- Assemble flag poles & Sleeves
 - Will require volunteers to complete the assembly

Questions?

